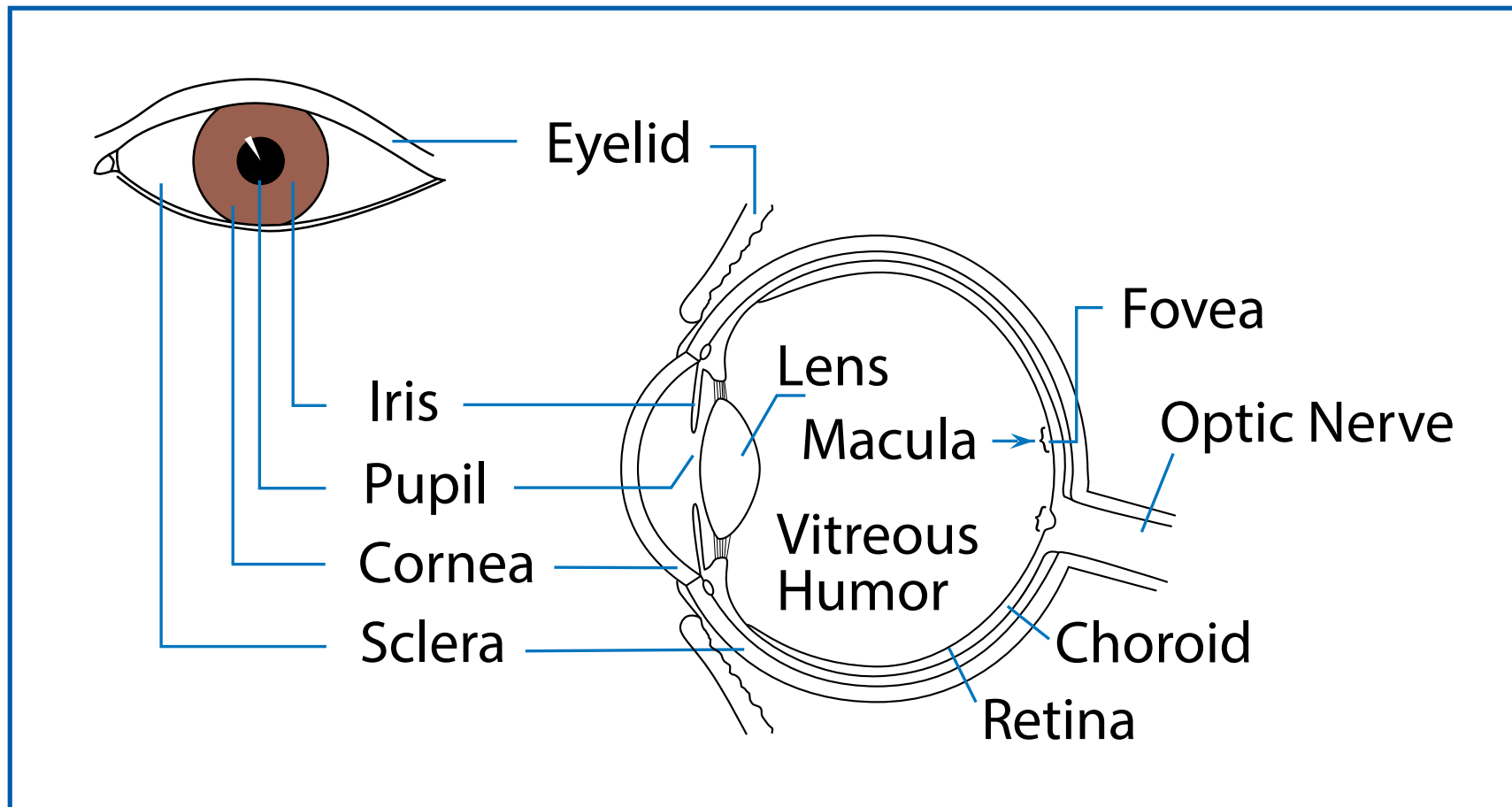




Parts of the Eye





Choroid

A layer of blood vessels that feeds the retina.

Cornea

The clear outer part of the eye's focusing system located at the front of the eye.

Eyelid

The skin-covered structure that protects the front of the eye; limits light entering the eye; spreads tears over cornea.

Fovea

The centre of the macula; gives the sharpest vision.

Iris

The coloured part of the eye; regulates the amount of light entering the eye.

Lens

The clear part of the eye behind the iris that helps to focus light on the retina. Allows the eye to focus on both far and near objects.

Macula

The small sensitive area of retina that gives central vision; contains the fovea.

Optic nerve

The bundle of over one million nerve fibres that carries visual messages from the retina to the brain.

Pupil

The opening at the centre of the iris. The iris adjusts the size of the pupil and controls the amount of light that can enter the eye.

Retina

The light-sensitive tissue lining the back of the eyeball; sends electrical impulses to the brain.

Sclera

The tough, white outer coat of the eye.

Vitreous Humor

The clear gel filling the inside of the eye.