



TEMPLATES

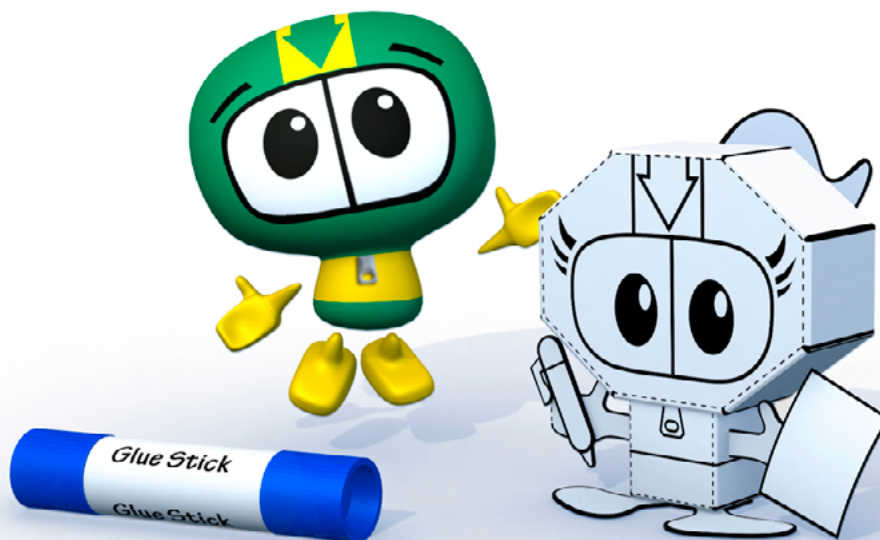
Millie and Max – cut and fold

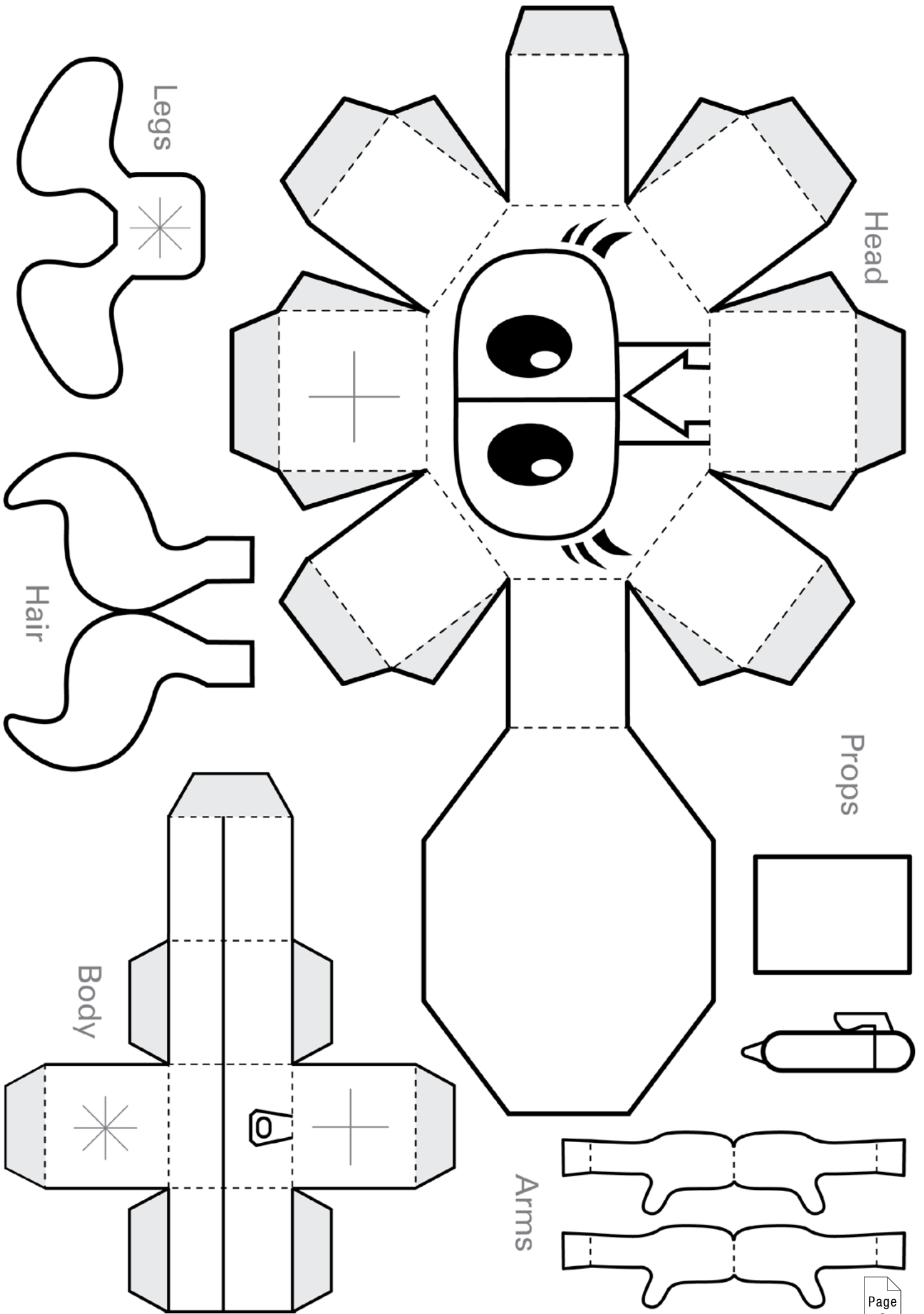
Instructions for black and white template

Would you like your own model of Millie or Max?

Simply print out a template and assemble as follows:

1. Colour in the template.
2. Cut around the bold black lines.
3. Fold along the dotted lines.
4. Use glue or sticky tape to secure the parts of the character.
5. Stick the individual parts together to create your final model.





Legs

Head

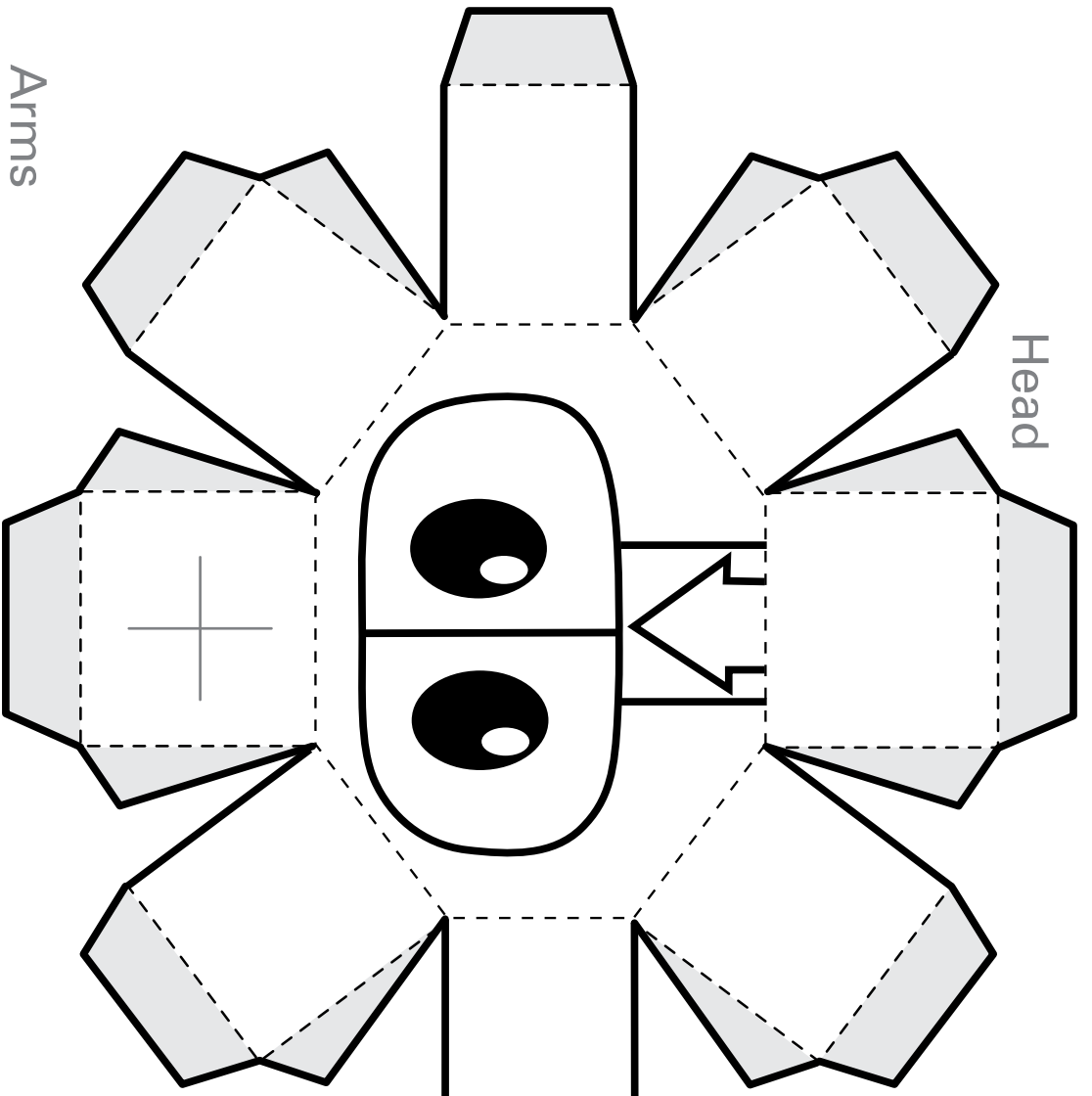
Hair

Props

Body

Arms

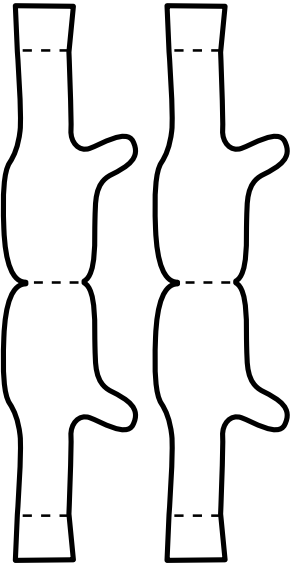
Head



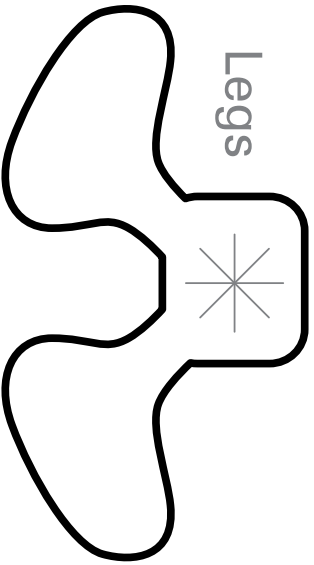
Props



Arms



Legs



Body

